

\$11,900,000 - 9577 Sideroad 17, Erin

MLS® #X8451968

\$11,900,000

0 Bedroom, 0.00 Bathroom, 8,752 sqft
Industrial on 428.00 Acres

Erin, Erin, Ontario

+/- 8752 sf Industrial/ Commercial Multi-unit building in Erin, including +/-1,200 sf Office space, on +/- 7.76 acres lot. Additional +/- 1,200 sf mezzanine (3 total) and 2 Poly Coveralls (+/- 1,500 sf & +/- 1,296 sf) with excess land for future building expansion. Zoning allows transportation terminal, outside storage, contractors yard, RV Sales, etc. Located In Erin Industrial Park. Growing community. Business is relocating.

****EXTRAS**** Please Review Available Marketing Materials Before Booking A Showing. Please Do Not Walk The Property Without An Appointment. (id:6289)

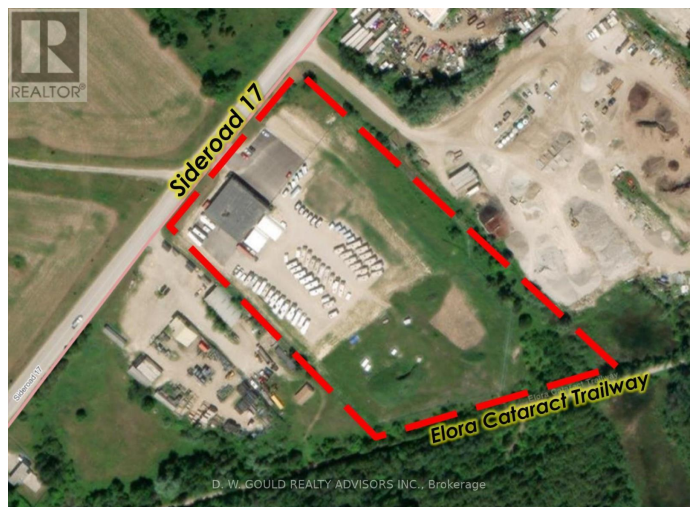
Essential Information

Listing #	X8451968
Price	\$11,900,000
Bathrooms	0.00
Square Footage	8,752
Acres	428.00
Type	Industrial

Community Information

Address	9577 Sideroad 17
Subdivision	Erin
City	Erin
Province	Ontario
Postal Code	N0B1T0

Amenities



Features Irregular lot size

Interior

Heating Natural gas Other

Cooling Fully air conditioned

Listing Details

Listing Office D. W. GOULD REALTY ADVISORS INC.



The trademarks MLS®, Multiple Listing Service® and the associated logos are owned by The Canadian Real Estate Association (CREA) and identify the quality of services provided by real estate professionals who are members of CREA. REALTOR®. Member of CREA and more.

Listing information last updated on October 14th, 2025 at 9:01pm EDT