

\$12,500 - 406 - 3823 Terrace Lane, Fort Erie (crystal Beach)

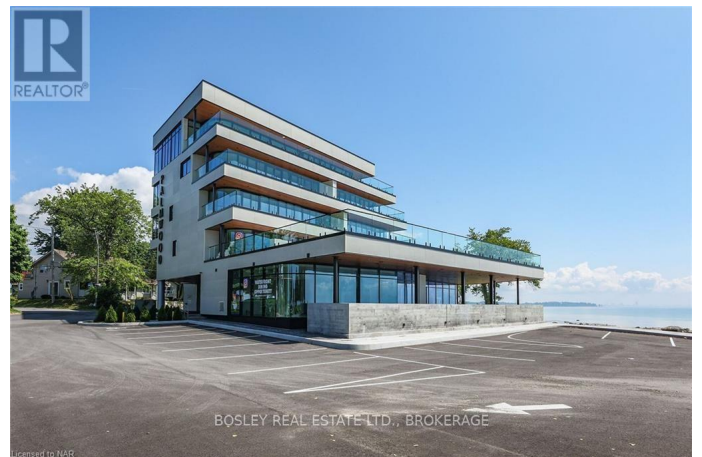
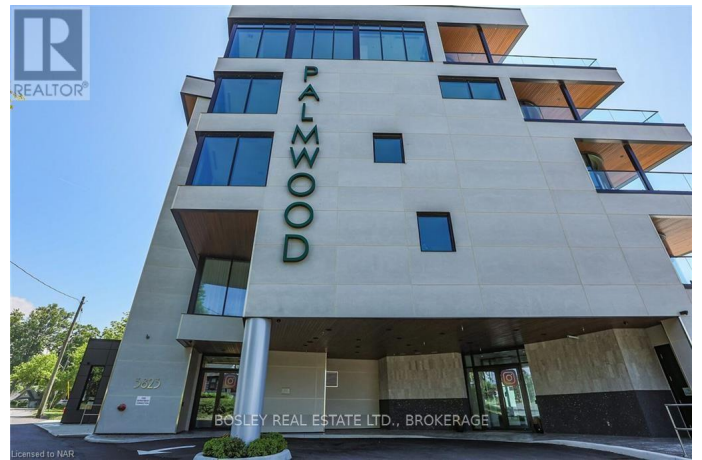
MLS® #X9411887

\$12,500

2 Bedroom, 1.00 Bathroom,
Single Family on 0.00 Acres

337 - Crystal Beach, Fort Erie (crystal Beach),
Ontario

Located in historic Crystal Beach on the shores of Lake Erie - Canada's South Shore, the suites at THE PALMWOOD offer an incomparable lakeside living adventure only available to six fortunate participants; this is an exceptional once-in-a lifetime opportunity. Designed by ACK Michael Allan with interiors by B.B. Burgess & Associates they are the perfect blend of sophistication, quality, and understated elegance. Each offers a great-for-entertaining open plan with walkouts to an impressively large private lakeside terrace. Expect a well-appointed galley-styled gourmet kitchen with an abundance of cupboard and counter space, pot-filler and filtered water faucets, under-valance lighting, impressive quartz counters with water-fall edge finish, plus 6 Miele Appliances you won't be disappointed! You will appreciate the practical step-saving amenities including utility / storage room, in-suite laundry with Gorenje Stacking Washer and Dryer and the individually controlled forced air electric heating and cooling with energy saving programable ECOBEE Smart Thermostat and the cozy two-sided fireplace, two bedrooms and opulent spa baths of course. You will have the exclusive use of two assigned parking spaces - one underground and one outdoor. Secure intercom entry with only-to-your-floor elevator service. Come and experience the



perfect blend of tranquility and sophistication at THE PALMWOOD. SUITE 406 offers 1782 SQ FT and 464 SQ FT Terrace; Barrier-free accessibility to the second bedroom and main bath. Notice the architectural detail in the coffered ceilings and the indirect lighting, The Palmwood is a no smoking building. (id:6289)

Essential Information

Listing #	X9411887
Price	\$12,500
Bedrooms	2
Bathrooms	1.00
Acres	0.00
Type	Single Family
Sub-Type	Condominium/Strata

Community Information

Address	406 - 3823 Terrace Lane
Subdivision	337 - Crystal Beach
City	Fort Erie (crystal Beach)
Province	Ontario
Postal Code	L0S1B0

Amenities

Parking Spaces	2
Parking	Garage, Underground
# of Garages	1
Is Waterfront	Yes
Waterfront	Waterfront

Interior

Appliances	Water Heater, Dishwasher, Dryer, Garage door opener, Microwave, Hood Fan, Stove, Washer, Wine Fridge, Refrigerator
Heating	Electric Forced air
Cooling	Central air conditioning
Fireplace	Yes
# of Fireplaces	1

Exterior

Exterior

Stucco

Listing Details

Listing Office

BOSLEY REAL ESTATE LTD., BROKERAGE



The trademarks MLS®, Multiple Listing Service® and the associated logos are owned by The Canadian Real Estate Association (CREA) and identify the quality of services provided by real estate professionals who are members of CREA. REALTOR®. Member of CREA and more.

Listing information last updated on October 12th, 2025 at 4:46am EDT