

\$659,000 - 113 - 65 Denzil Doyle Court, Ottawa

MLS® #X9518290

\$659,000

0 Bedroom, 0.00 Bathroom, 54,650 sqft

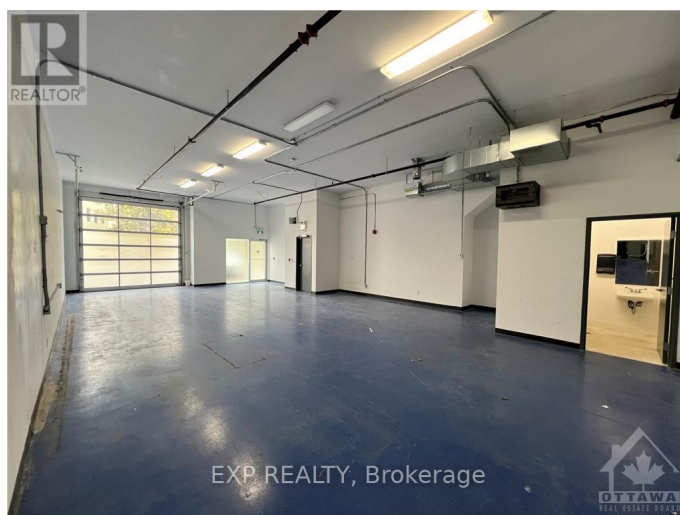
Industrial on 0.00 Acres

9010 - Kanata - Emerald Meadows/Trailwest,
Ottawa, Ontario

Exciting opportunity to own your own commercial condominium unit in the heart of Kanata. These condos are well suited for a wide range of businesses with warehouse, light manufacturing and assembly, retail/service businesses and office uses combining to create a vibrant entrepreneurial community. Situated in one of the region's fastest growing neighbourhoods, the Denzil Doyle condos offer a true Work, Live, Play opportunity. Flexible zoning of business park industrial (IP4) allows for a wide range of uses. Superior location, minutes from Highway 417 and surrounded by residential homes in Glen Cairn and Bridlewood. At ~1,350 SF, with ample on-site parking, these ideally sized condominiums won't last long. *Note: There are 40 units available in all combinations of up/down and side to side or even front to back. If you require more space than what is available in this listing, please reach out to discuss your requirement. **Pictures with listing are not unit specific. (id:6289)

Essential Information

Listing #	X9518290
Price	\$659,000
Bathrooms	0.00
Square Footage	54,650
Acres	0.00



Type Industrial

Community Information

Address 113 - 65 Denzil Doyle Court
Subdivision 9010 - Kanata - Emerald Meadows/Trailwest
City Ottawa
Province Ontario
Postal Code K2M2G8

Amenities

Parking Spaces 79

Interior

Heating Natural gas Forced air
Cooling Fully air conditioned

Listing Details

Listing Office EXP REALTY



The trademarks MLS®, Multiple Listing Service® and the associated logos are owned by The Canadian Real Estate Association (CREA) and identify the quality of services provided by real estate professionals who are members of CREA. REALTOR®. Member of CREA and more.

Listing information last updated on October 14th, 2025 at 6:16am EDT