

\$735,000 - 143-145 Main Street E, Champlain

MLS® #X9523455

\$735,000

0 Bedroom, 0.00 Bathroom, 4,156 sqft

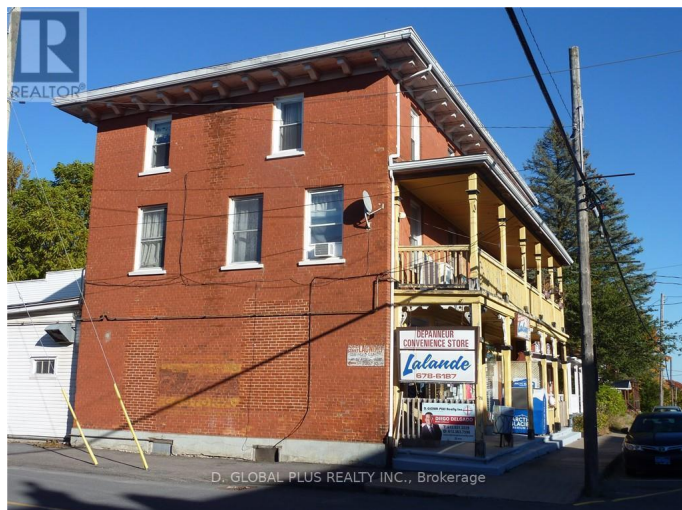
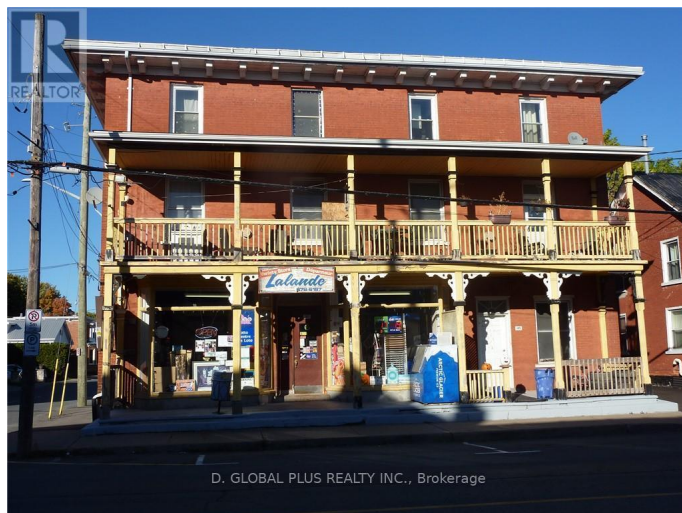
Multi-family on 0.00 Acres

613 - Vankleek Hill, Champlain, Ontario

FULLY RENTED !!! PRIME LOCATION !!!
LOCATED 1 HOUR FROM OTTAWA OR
MONTREAL WITH EASY ACCESS TO HWY
417. WELL MAINTAINED !!! GOOD
CONDITION. INCOME PROPERTY !!!
POSITIVE CASH FLOW. MULTIFAMILY
COMMERCIAL VICTORIAN BUILDING
CENTRALLY LOCATED IN VANKLEEK HILL
CLOSE TO THE MANY AMENITIES
OFFERED BY DOWNTOWN LIVING; SHOPS,
RESTAURANTS, BANKS, RECREATIONAL
PARKS, BARS AND MORE. SOME
UPGRADES INCLUDE FIRE ALARM
MONITORING SYSTEM-CERTIFIED
ANNUALLY, HOT WATER TANKS, TWO
NATURAL GAS SPACE HEATERS,
BATHROOMS, SOME FLOORING, UPDATED
KITCHEN IN LEVEL 2 UNIT. BACK ROOF OF
BUILDING , FIRE STAIRS AND BALCONY.
THIRD FLOOR BATHROOMS, SOME
WINDOWS CHANGED IN 2020. EACH UNIT
HAS A HYDRO METER AND HOT WATER
TANK AND TENANTS ARE RESPONSIBLE
FOR THEIR OWN UTILITIES. (id:6289)

Essential Information

Listing #	X9523455
Price	\$735,000
Bathrooms	0.00
Square Footage	4,156
Acres	0.00



Type Multi-family

Community Information

Address 143-145 Main Street E
Subdivision 613 - Vankleek Hill
City Champlain
Province Ontario
Postal Code K0B1R0

Amenities

Parking Spaces 5

Interior

Heating Natural gas Baseboard heaters

Exterior

Exterior Brick
Lot Description 53.31 x 77.97 FT ; 1
Foundation Stone

Listing Details

Listing Office D. GLOBAL PLUS REALTY INC.



The trademarks MLS®, Multiple Listing Service® and the associated logos are owned by The Canadian Real Estate Association (CREA) and identify the quality of services provided by real estate professionals who are members of CREA. REALTOR®. Member of CREA and more.

Listing information last updated on October 13th, 2025 at 7:31pm EDT